



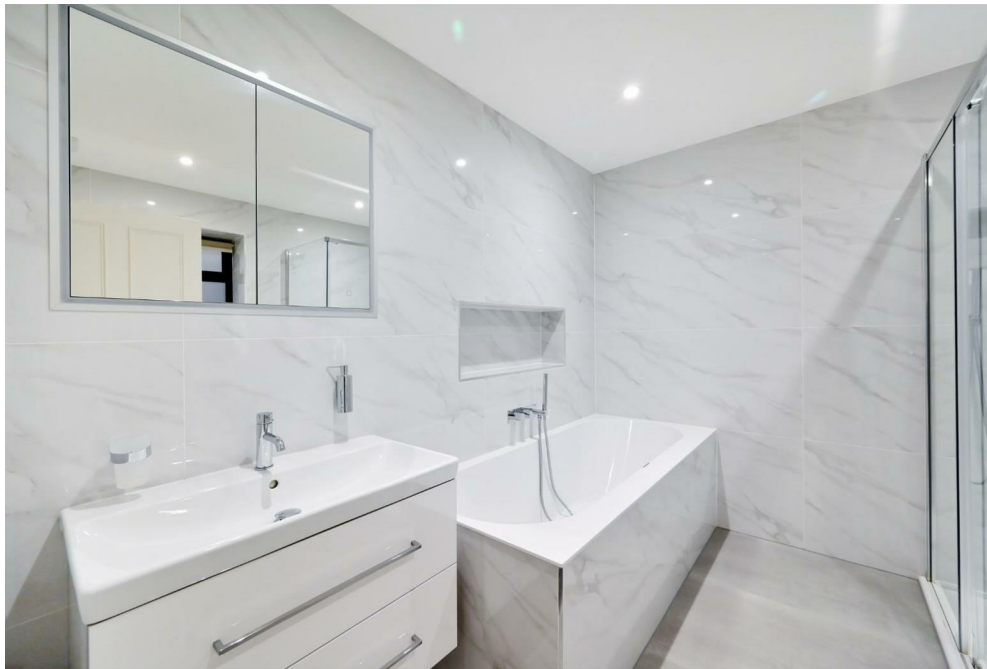
12, Welbeck Street,
Marylebone, W1G

£2,950 Per Week,

NAPIER WATT

T: 0207 935 0011
E: enquiries@napierwatt.co.uk
W: napierwatt.co.uk

35 Berkeley Square, Mayfair, London, W1J 5BF







Description

Recently refurbished to a high standard, this spacious apartment in Marylebone Village offers a contemporary finish while retaining its original features. It includes a large reception room with high ceilings, an open-plan kitchen, and a conservatory that leads to a private terrace. The property has three bedrooms, three bathrooms, a separate WC and a study. Welbeck Street is well located for the restaurants and boutique shops of Marylebone High Street, with excellent transport links from Regent's Park, Oxford Circus and Bond Street stations.

Available, unfurnished.

3 Bedroom : 3 Bathrooms : Reception : Guest W.C. : Westminster Council Tax Band H : EPC Rating C

Key Features

- PATIO
- MARYLEBONE VILLAGE
- CONSERVATORY
- UNFURNISHED

Terms

Fees & Charges: Tenancies exceeding £100,000 Per annum £480 inc VAT, Tenancies where a company is a tenant £480 Inc VAT.

IMPORTANT: We would inform prospective purchasers that these sales particulars have been prepared as a general guide only. A detailed survey has not been carried out, nor the services, appliances and fittings tested. Room sizes should not be relied upon for furnishing purposes and are approximate. If floor plans are included, they are for guidance only and illustration purposes only and may not be to scale. If there are any important matters likely to affect your decision to buy, please contact us before viewing the property.